

JOB: _____

DESIGNER: _____

CONTACT: _____



PRODUCT DESCRIPTION

Ecowarm® Radiantboard™ is a modular radiant panel system comprised of grooved plywood boards laminated with aluminum. The system was designed for new construction and remodeling over a subfloor or cement, and includes straight and end combo panels laid out and installed in a pattern. Panels are attached by means of construction adhesive combined with screws, or cross stapling as recommended in the Installation Manual. The pattern creates the pathway into which 1/2" ASTM F 876-877 PEX tubing is placed.

TECHNICAL SPECIFICATIONS

Board Construction: 6 or 7 Layer Plywood

Weight: 2.2 lb/sq. ft. 17.5 lb/ board

Nominal Dimensions: 2'x4' (47" x 23.5")

Typical Board Mix: 62% Straight. 38% End Combo.

Thickness: 3/4"

Board Types: Straight. End Combo.

Groove Depth: 5/8"

Pallet Size: 4'x4'x32" Full.

PEX: 1/2" Nominal ASTM F 876-877 PEX

Pallet Capacity: 74 Boards per Full Pallet.

Groove Distance / PEX Spacing: 11.75" OC

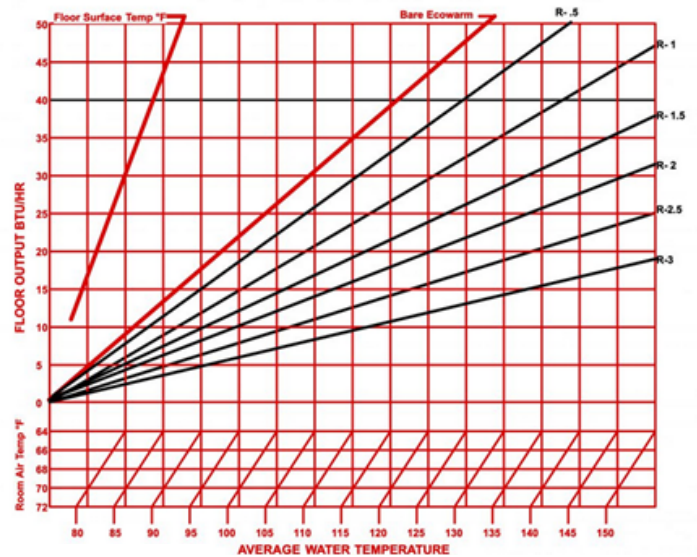
Pallet Weight: 1,338 lbs.

Surface: .010 Aluminum Laminate

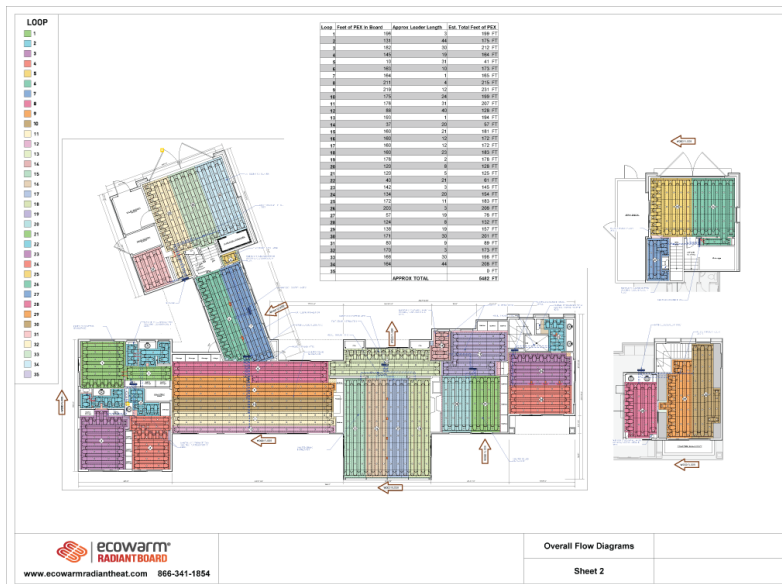
Packaging: Corner Protected. Shrink Wrapped

HOW TO USE THE PERFORMANCE CHART

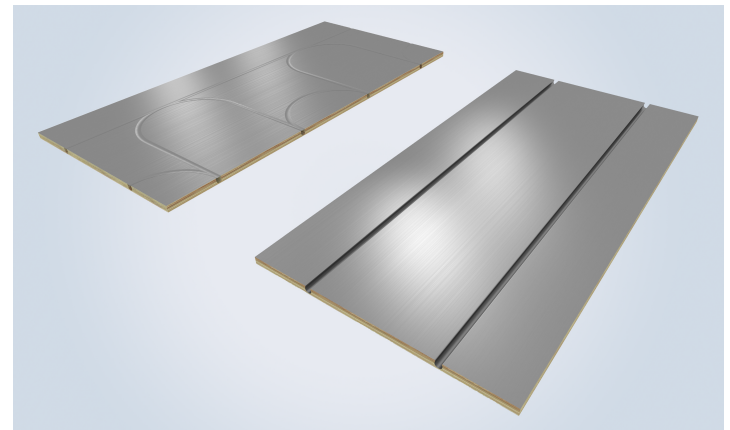
First calculate the heating output required in BTU per hour per square feet. Proceed horizontally right across the page until you intersect the R-Value line of your floor coverings. Then drop straight down vertically to the horizontal line of your desired room temperature, then angle down to the left to read the average required water temperature. For example, if you need 15 BTU per hour per square foot with an R-5 floor covering and a 70F room temperature, you should get 95F average water temperature.



Efficiency Chart



PROJECT SHOP DRAWINGS



ECOWARM PART NUMBERS

STRAIGHT: ECO-EWP-S2

END COMBO: ECO-EWP-C2

Ecowarm RadiantBoard projects shall be provided detailed CAD drawings and schedules upon acceptance. System shall be installed as described in the current edition of the Ecowarm RadiantBoard Installation Manual.